

Thermovisc Series



Thermovisc 100 and Thermovisc 200

Digitally controlled immersion Thermostats

Common features

- The following parameters can be configured and shown on the LCD display:
 - Maximum and minimum temperature limits.
 - Select °C or °F
 - Display resolution 0.1 °C
 - External temperature (Probe).
 - Over temperature set limits for alarm.
 - Calibration
 - Low liquid level indicator.
- Temperature probe Pt 100.
- Heating element made of stainless steel INCOLOY resistant to high temperatures and corrosive environments.
- Circulation Pump with adjustable flow rate suitable for external temperature control for **Viscometers**, polarimeters and refractometers, etc.
- Cooling coil to maintain ambient temperatures using tap water.
- External temperature control connection using a Pt 100 probe.
- RS-232 interface for computer control or printing data.
- External metal case coated in a corrosive resistant epoxy. All parts in contact with liquid are made of AISI 304 stainless steel.
- Maximum working volume to maintain temperature: 20 litres.
- A clamp and finger screw attach the unit to the tank, alternatively the extendible support bridge accessory can be used.
- Minimum depth of the tank: 14cm.



Thermovisc 100 and 200



Model	Code	Temp control range °C	Stability °C	Pump pressure/ Flow H2O	Power W	Capacity (l)	Special support f/beakers
Thermovisc100B9	B100B9	Amb.+5 to 100 Ext. cooling from -20 to 100	±0.05	150 mbar 12l/min.	1060	9	No
Thermovisc100B9S	B100B9S	Amb.+5 to 100 Ext. cooling from -20 to 100	±0.05	150 mbar 12l/min.	1060	9	Yes
Thermovisc200B9	B200B9	Amb.+5 to 100 Ext. cooling from -20 to 200	±0.05 to 100°C ±0.1 to 200°C	150 mbar 12l/min.	2060	9	No
Thermovisc200B9S	B200B9S	Amb.+5 to 200 Ext. cooling from -20 to 200	±0.05 to 100°C ±0.1 to 200°C	150 mbar 12l/min.	2060	9	Yes
Thermovisc100B12	B100B12	Amb.+5 to 100 Ext. cooling from -20 to 100	±0.05	150 mbar 12l/min.	1060	12	No
Thermovisc100B12S	B100B12S	Amb.+5 to 200 Ext. cooling from -20 to 100	±0.05	150 mbar 12l/min.	1060	12	Yes
Thermovisc200B12	B200B12	Amb.+5 to 200 Ext. cooling from -20 to 200	±0.05 to 100°C ±0.1 to 200°C	150 mbar 12l/min.	2060	12	No
Thermovisc200B12	B200B12S	Amb.+5 to 200 Ext. cooling from -20 to 200	±0.05 to 100°C ±0.1 to 200°C	150 mbar 12l/min.	2060	12	Yes
Thermovisc100B20	B100B20	Amb.+5 to 200 Ext. cooling from -20 to 100	±0.05	150 mbar 12l/min.	1060	20	No
Thermovisc200B20	B200B20	Amb.+5 to 200 Ext. cooling from -20 to 200	±0.05 to 100°C ±0.1 to 200°C	150 mbar 12l/min.	2060	20	No

Fungilab has different bath volumes in which you can adapt special accessories designed to be able to thermostate 600 ml beakers, as well as all accessories for rotational viscometers.

Thermovisc 100-F8 and Bath Thermocap



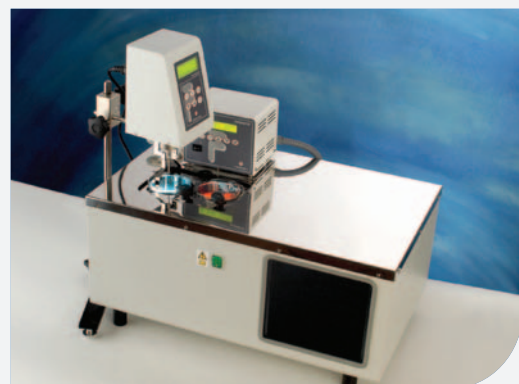
Thermovisc 100-F8 and Thermovisc 100-F8-30

Refrigerated re-circulation thermostat

Common Features

- Working volume: 8 litres.
- AISI 304 stainless steel top and lid with an inner tank of AISI 310 stainless steel.
- Complete with a pump for internal and external liquid circulation with push on tube connectors for inlet and outlet.
- A drain tap is placed at the side of the unit.
- A hermetically sealed CFC free compressor with a ventilated evaporator is mounted on anti-vibration mounts.

Model	Code	Temp range °C	Pump pressure/ Flow h20	Comp HP	Power W	Weight Kg	Special support f/beakers
Thermovisc100-F8	B100F8	-10 +100	150 mbar 12l/min.	1/8	1150	28	No
Thermovisc100-F8S	B100F8S	-10 +100	150 mbar 12l/min.	1/8	1150	28	Yes
Thermovisc100-F8-30	B100F8-30	-10 +100	150 mbar 12l/min.	1/8	1150	30	No



Precision Viscometer Bath THERMOCAP

Main Features

- Temperature range: Amb. +5°C to 100°C
- Stability: ± 0.05 °C
- Homogeneity: ± 0.05 °C
- Set error value: ± 0.09 °C
- Resolution: 0.1 °C
- Temperature sensor: PT100
- Power: 1000 W
- Stainless steel lid AISI 304 with three independent universal supports:
 - Viscometer location
 - Thermometer location
- Bath capacity: 20 liters (made of borosilicate glass).
- Suitable for Cannon-Fenske, Ubbelohde, Ostwald and BS U Tube viscometers.
- Safety: Conforms to the DIN 12879.2 regulations.
- Manufactured for the glass viscometers calibration conform to UNE 400313, ISO 3105, ASTM D445, ASTM D2515.

Universal support for capillary viscometers, manufactured in PTFE, stainless steel AISI 304 subsection clamp. Indicated for:

- Cannon-Fenske Routine
- Cannon-Fenske Opaque
- Ubbelohde
- Ostwald
- BS U tube

Universal support for capillary viscometers



Thermocap Viscometer Bath
Code B100V20